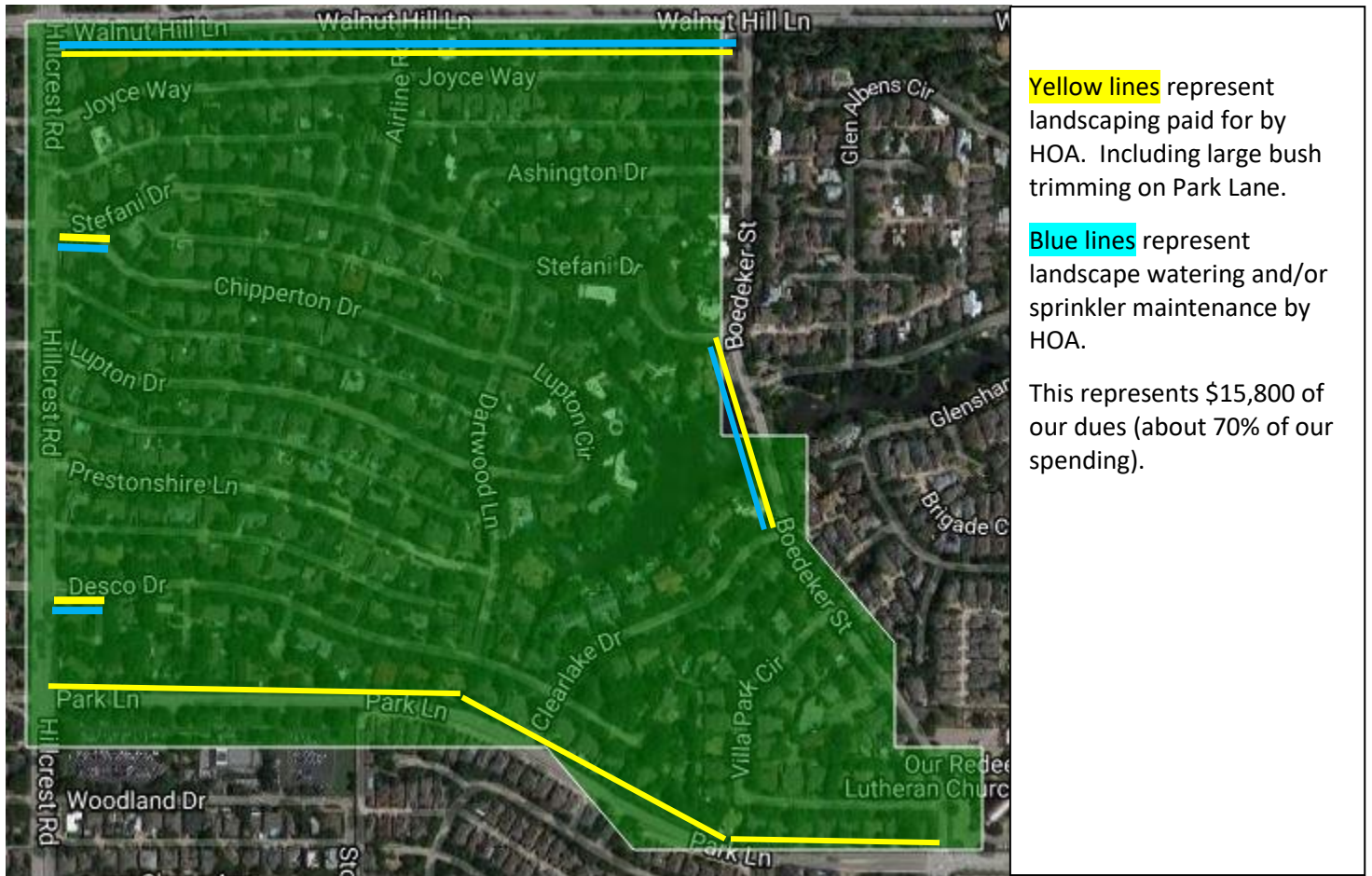


Windsor Park

• HOMEOWNERS ASSOCIATION •

How does the HOA use my dues payment each year?

1. The primary expense of the HOA is the maintenance of the landscaping along the perimeter, especially Walnut Hill and Park Lane. The landscape maintenance is approximately \$13,500/year and the water is approximately \$2,300/year. We also have occasional expenses for sprinkler repair or plants that must be replaced. Before this service began the walls were covered with graffiti and unsightly. This service benefits the entire neighborhood and boosts our property values!



2. The WPHA Social Committee was formed in 2015, with a primary objective to "meet and greet" more neighbors. This committee typically plans three to four event per year with a total expenditure of about \$2,500. In 2016 there was a "pot luck" dinner, Happy Hour at DISH, Bounce House BBQ, Komen Race mingle, and the Holiday party. These events help us meet new neighbors and enjoy the friendship of everyone.

3. Most importantly, we focus on security improvements throughout the neighborhood. In 2016 we helped guide the installation of four new alley lights and hope to re-energize this project in 2017. The alley light project was put on hold in 2016 to more sharply focus our efforts on the new ENP program. The ENP (Enhanced Neighborhood Patrol) is **not** funded through the HOA but by each individual homeowner. WPHA and ENP will continue to work together in identifying new avenues for enhancing neighborhood safety and security.